

Han Solo™ in Carbonite
TALKING
CLAPPER®
with NIGHT LIGHT

CLAP ON! CLAP OFF! Sound Activated ON/OFF switch!



Joseph Enterprises, Inc.
Hillside, NJ 07205

Congratulations! *You are now the owner of the Han Solo™ Talking Clapper® with Night Light. The Han Solo™ Talking Clapper® with Night Light is a sound activated on and off switch for appliances. The Han Solo™ Talking Clapper® with Night Light can operate an appliance by clapping two times to turn it on and two times again to turn it off. Clap 3 times to turn the night light on and off. Each time you turn the night light on or off the Han Solo™ Talking Clapper® with Night Light speaks a line from the movie Star Wars.*

NEMA
Power
Plug



Speaker



Microphone

LED



Speaker on/
off switch

NEMA
Power Socket



CLAP ON!
CLAP OFF!

Clap to
activate lamp and
talking night light.

TURN ON!



"Oh. They've encased him
in Carbonite. He should be
quite well protected. If he
survived the freezing
process that is."
- C-3PO

TURN OFF!



Hear Chewbacca growl
with carbon freezing
sound effect.

How to operate an *appliance* by clapping 2 times

1. Plug an appliance into the receptacle of the Han Solo™ Talking Clapper® with Night Light.
2. Plug the Han Solo™ Talking Clapper® with Night Light in the wall outlet.
3. Manually turn your appliance's switch to the “on” position.
(It is okay if appliance does not turn on, go to next step)
4. Turn your appliance on or off by clapping twice
 - You don't have to clap very hard! The clapping sequence is more important than how loudly you clap.

CLAP (pause) CLAP (pause) (pause) (pause)

Each pause is approximately ½ second long

5. After you clap twice, your appliance will turn on or off.
(If your appliance does not turn on, your pauses may be too long. Try clapping a bit faster.)

2X CLAPS INSTRUCTIONS

How to operate the appliance by clapping 2 times



Plug an appliance into the receptacle of the Han Solo™ Clapper® with Night Light.



Plug the Han Solo™ Clapper® with Night Light into the wall outlet.



Manually turn your appliance to the **ON** position. (It is okay if appliance does not turn on, go to next step)



Turn your appliance **ON** or **OFF** by clapping twice with a half second pause between each clap:

CLAP (pause) **CLAP** (pause) (pause) (pause)



After you clap twice, your appliance will turn **ON** or **OFF** (if your appliance does not turn on, your pauses may be too long. Try clapping a bit faster).

How to operate *talking night light* by clapping 3 times

1. Plug the Han Solo™ Talking Clapper® with night light into the wall outlet.
2. You can now turn your talking night light on or off by clapping three times.

You don't have to clap very hard! The clapping sequence is more important than how loudly you clap.

CLAP (pause) CLAP (pause) CLAP (pause) (pause) (pause)

Each pause is approximately ½ second long (if your night light does not turn on, your pauses may be too long. Try clapping a bit faster)

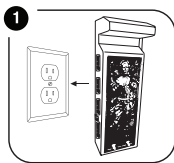
3. Night light will turn on and you will hear Han Solo™ sounds.

Note: To silence Han Solo™' sounds, turn the switch on the side of the unit to “off”

4. The Han Solo™ Talking Clapper® with Night Light will operate with 3 claps whether or not an appliance is connected. The night light operates independently from any appliance that may be plugged into the 2 Clap receptacle.

3X CLAPS INSTRUCTIONS

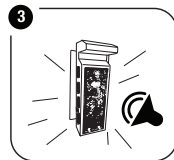
How to operate the talking night light by clapping 3 times



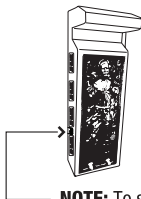
Plug the Han Solo™ Clapper® with Night Light into the wall outlet.



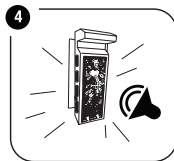
Turn night light **ON** or **OFF** by clapping 3x with a half second pause between each clap.



After you clap 3x, the night light will turn **ON** or **OFF** and Han Solo™ Clapper® with Night Light will speak.



NOTE: To silence Han Solo™ Clapper® sound effects, turn the switch on the side of the unit to **OFF**.



OR



The Han Solo™ Clapper® with Night Light will operate with 3 claps whether or not an appliance is connected. The night light operates independently from any appliance that may be plugged into the 2 Clap receptacle.

Hints and Tips

If the Han Solo™ Talking Clapper® does not turn on when clapping:

- a. Make sure the Han Solo™ Talking Clapper® is plugged in properly.
- b. Make sure the appliance is plugged all the way into the socket in the Han Solo™ Talking Clapper®.
- c. Make sure the appliance is turned on and the appliance is functional. To test if your appliance will work with the Han Solo™ Talking Clapper®, turn the appliance to the “on” position and plug it directly into the wall. If the appliance turns on automatically, it will work.
- d. Make sure the claps are loud enough and have the correct timing. See above for the timing of the claps.
- e. Try clapping faster. The pause between claps should be very brief.
- f. Be careful in a room with a lot of echoes – the Han Solo™ Talking Clapper® can hear the echoes as noise or other claps and not turn on the light.
- g. Make sure nothing is blocking the Han Solo™ Talking Clapper®, such as furniture or curtains.

Frequently Ask Questions (FAQ)

1. Which appliances does the Han Solo™ Talking Clapper® work with?

- a. Christmas Tree lights
 - *Yes that is a good use of the product.*
- b. Fluorescent lights
 - *Yes*
- c. LED Light Bulbs
 - *Yes*
- d. Normal (Incandescent) lights
 - *Yes*
- e. A television
 - *It is possible, but most of today's TVs need to remain plugged in to keep their settings and work with the remote control.*
- f. A radio
 - *Yes, but be aware that some of the today's radios require that they be plugged in all of the time or do not turn on when power is applied. Those will not work.*
- g. A three-way light bulb
 - *Yes. Set the light to one of the three brightness levels, then the Han Solo™ Clapper® is used to turn on and off the light.*

2. Which appliances should I NOT use with the Han Solo™ Clapper?

- a. Any electrical heating appliance
 - coffee maker
 - A space heater
 - Toasters
 - Etc.
- b. Medical equipment
- c. Inductive loads, such as a motor
- d. An Air conditioner
 - An Air conditioner is higher than the maximum allowed wattage of 200 watts
- e. A computer monitor
 - Most computer monitors do not turn on when the power is applied so this is not a good application for the Han Solo™ Talking Clapper®.

3. Does the Han Solo™ Talking Clapper® have two or three prong sockets?

- Two prong

4. What is the Maximum wattage that the Han Solo™ Talking Clapper® can control?

- 200 watts

5. Does the Han Solo™ Talking Clapper work overseas on 220 volts?

- No, the Han Solo™ Talking Clapper® is designed only for 120 vac.

6. My Clapper is not working anymore why?

The Han Solo™ Talking Clapper® is made with a fuse for safety reasons.

1. If the Han Solo™ Talking Clapper® is over loaded with too high of wattage the Han Solo™ Talking Clapper® fuse will blow and the Han Solo™ Clapper® will not work. The fuse is not replaceable by the user.
2. If the Han Solo™ Talking Clapper® is controlling a Light bulb that burns out this may also blow the fuse and the Han Solo™ Clapper® will not work.

7. How close do I need to be to the Han Solo™ Talking Clapper® for it to hear my claps?

This depends greatly on the room and the objects between you and the Han Solo™ Talking Clapper®

1. First do not block the Han Solo™ Talking Clapper® with drapes or furniture. These will block your claps from reaching the Han Solo™ Talking Clapper®.
2. Familiarize yourself with how the Han Solo™ Talking Clapper® works in your room by —

- a. Standing within about 3 feet of the Han Solo™ Talking Clapper® and clap to turn on/off the light.
 - b. Move back a few feet and try again.
 - c. Continue until you are too far away from the Clapper for it to detect your claps.
3. Now you know the clap detection range in your room.

IMPORTANT SAFETY NOTES

- a. CAUTION: Risk of Electric Shock and Fire Hazard.
- b. This is not a toy and is not intended for use by children.
- c. For adult use only.
- d. For safe use, plug only into exposed wall outlets where a device is ventilated and cannot contact bed covering or other material.
- e. Do not use with extension cords.
- f. Match Wide Blade of Plug to Wide Slot, Fully Insert. Do not use the Han Solo™ Talking Clapper® with any electrical heating appliances such as toasters, hair dryers, coffee pots, etc.

- g. Do not use the Han Solo™ Talking Clapper® with any appliance that can create a fire hazard with prolonged use.
- h. Do not use with medical equipment.
- i. Do not use with inductive loads.
- j. The maximum wattage for an appliance is 200 watts
- k. Indoor Dry Location Use Only

WARNING

The Han Solo™ Talking Clapper® requires standard 120 VAC power.

Do not plug the Han Solo™ Talking Clapper® into any non-standard power source as this may lead to electric shock or fire.

For example, Do Not use the Han Solo™ Talking Clapper® on a dimming circuit.

This device complies with part 15 of the FCC Rules. Operation is subject to the following two conditions:

1. This device may not cause harmful interference.
2. This device must accept any interference received, including interference that may cause undesired operation.

CAUTION: The user that changes or modifications not expressly approved by the party responsible for compliance could void the user's authority to operate the equipment.

NOTE: This equipment has been tested and found to comply with the limits for a class B digital device, pursuant to part 15 of the FCC Rules. These limits are designed to provide reasonable protection against harmful interference in a residential installation. This equipment generates, uses and can radiate radio frequency energy and, if not installed and used in accordance with the instructions, may cause harmful interference to radio communications. However, there is no guarantee that interference will not occur in a particular installation. If this equipment does cause harmful interference to radio or television reception, which can be determined by turning the equipment off and on, the user is encouraged to try to correct the interference by one or more of the following measures:

- Reorient or relocate the receiving antenna.
- Increase the separation between the equipment and receiver.
- Connect the equipment into an outlet on a circuit different from that to which the receiver is connected.
- Consult the dealer or an experienced radio/TV technician for help.

Thirty (30) Day Limited Warranty

Joseph Enterprises offers a thirty (30) day limited warranty to the *original* purchaser of the Han Solo™ Talking Clapper®. The warranty covers defects in workmanship and materials only. It does not apply to product failures resulting from accidental damage, neglect, misuse or any other cause not associated with defects in workmanship or materials. Should the Han Solo™ Talking Clapper® prove to be defective within the thirty (30) days from the date of purchase, the product will either be repaired or replaced, at Joseph Enterprises' discretion, free of charge. Purchasers are advised to carefully read and follow the operating and safety instructions contained in this book and included on the back of the product.

This particular warranty shall disclaim Joseph Enterprises' obligation and sole responsibility respecting the product and all other warranties, implied or expressed, including implied warranties of fitness for a specific purpose. Joseph Enterprises does not authorize retailers and others to make any warranty concerning the product. Some states do not permit time limitations on an implied warranty, or limitation or exclusion of incidental or consequential damages, so the above limitations may not pertain to you.

This warranty grants you specific legal rights and you may also have additional rights that vary from state to state.

WE WELCOME YOUR FEEDBACK

*Many questions can be answered by calling our
Clapper Hotline at **800-557-5856**.*

*For quick answers to common questions, please
refer to our website's FAQ section. If you have
further inquiries, email us at **help@chia.com**.*