

The Child **TALKING** **CLAPPER®** with **NIGHT LIGHT**

CLAP ON! CLAP OFF! Sound Activated ON/OFF switch and Night Light!



Joseph Enterprises, Inc.
Hillside, NJ 07205

Congratulations! You are now the owner of The Child Talking Clapper® with Night Light. The Child Talking Clapper® with Night Light is a sound activated on and off switch for appliances. The Child Talking Clapper® with Night Light can:

- (a) Turn an appliance on and off by clapping two times.*
- (b) Turn the night light on and off and hear a quote from “The Mandalorian” by clapping 3 times.*

(a) HOW TO OPERATE YOUR APPLIANCE WITH 2 CLAPS (2 claps on, 2 claps off):

1. Plug an appliance into the receptacle of The Child Talking Clapper® with Night Light.
2. Plug The Child Talking Clapper® with Night Light into the wall outlet.
3. Manually turn your appliance’s switch to the “on” position. (It is okay if the appliance does not turn on, go to step 4).
4. Turn your appliance on or off by clapping twice

You don’t have to clap very hard! The clapping sequence is more important than how loudly you clap.

CLAP (pause) CLAP (pause) (pause) (pause)

Each pause is approximately ½ second long (if your appliance does not turn on, your pauses may be too long. Try clapping a bit faster).

INSTRUCTIONS

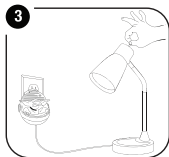
How to operate an appliance by clapping 2 times



1. Plug an appliance into the receptacle of The Child Talking Clapper® with Night Light.



2. Plug The Child Talking Clapper® with Night Light into the wall outlet.



3. Manually turn your appliance to the "on" position. (It is okay if the appliance does not turn on, go to step 4)



4. Turn your appliance on or off by clapping twice with a half second pause between each clap:

CLAP (pause) **CLAP** (pause) (pause) (pause)



5. After you clap twice, your appliance will turn on or off (if your appliance does not turn on, your pauses may be

(b) HOW TO OPERATE THE TALKING NIGHT LIGHT WITH 3 CLAPS

(3 claps on, 3 claps off):

1. Plug The Child Talking Clapper® with Night Light into the wall outlet.
2. You can now turn your talking night light on or off by clapping three times.

You don't have to clap very hard! The clapping sequence is more important than how loudly you clap.

CLAP (pause) CLAP (pause) CLAP (pause) (pause) (pause)

Each pause is approximately ½ second long (if your night light does not turn on, your pauses may be too long. Try clapping a bit faster)

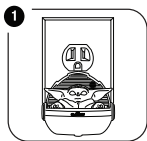
3. The night light will turn on and you will hear a quote from “The Mandalorian”.

Note: To turn off the sound so you won't hear the quotes, turn the switch on the bottom of the unit to “off”

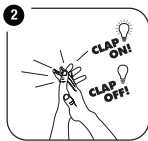
4. The Child Talking Clapper® with Night Light will operate with 3 claps whether or not an appliance is connected. The night light operates independently from any appliance that may be plugged into the 2 Clap receptacle.

INSTRUCTIONS

How to operate the talking night light by clapping 3 times



1. Plug The Child Talking Clapper® with Night Light into the wall outlet.



2. Turn the night light on or off by clapping 3x with a half second pause between each clap.



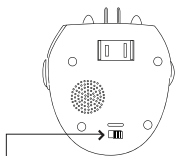
3. After you clap 3x, the night light will turn on or off and The Child Talking Clapper® with Night Light will speak.



OR



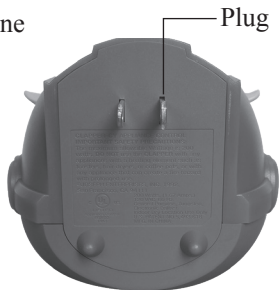
4. The Child Talking Clapper® with Night Light will operate with 3 claps whether or not an appliance is connected. The night light operates independently from any appliance that may be plugged into the 2 Clap receptacle.



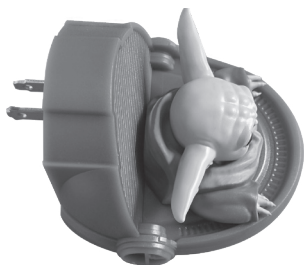
NOTE: To silence the famous quotes, turn the switch at the bottom of the unit to "off"



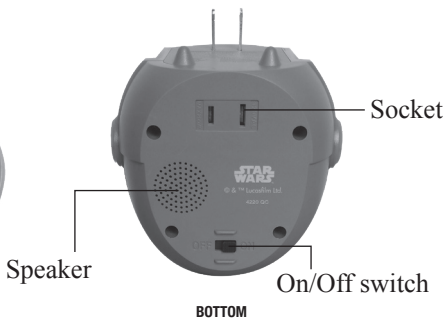
FRONT



BACK



TOP



BOTTOM

NOTE:

To silence The Child Talking Clapper® with Night Light voice, turn switch to OFF.

HINTS AND TIPS

If the The Child Talking Clapper® with Night Light does not turn on when clapping:

- a. If using with an appliance, make sure the appliance is plugged all the way into the socket in The Child Talking Clapper® with Night Light.
- b. Make sure the The Child Talking Clapper® with Night Light is plugged in the outlet properly
- c. Make sure the appliance switch is in the “on” position and the appliance is functional. You can check this by making sure the appliance turns on immediately when you plug it directly into the wall.
- d. Make sure the claps are loud enough and have the correct timing. See above for the timing of the claps. Please note, the pauses between claps should be about 1 second long.
- e. Be careful in a room with echoes – The Child Talking Clapper® with Night Light can hear the echoes as excess noise or other claps and not turn on the appliance.

FAQ

1. Which appliances does the The Child Talking Clapper® with Night Light work with?

a. Christmas Tree lights

- *Yes that is a good use of the product.*

b. Fluorescent lights

- *Yes*

c. LED Light Bulbs

- *Yes*

d. Normal (Incandescent) lights

- *Yes*

e. A TV

- *It is possible, however most modern TVs need to remain plugged in to keep their settings, which will not allow The Child Talking Clapper® with Night Light to function.*

f. A radio

- *It is possible, however most modern radios need to remain plugged in to keep their settings, which will not allow The Child Talking Clapper® with Night Light to function.*

g. A three-way light bulb

- *Yes. Set the light to any of the three brightness levels, then The Child Talking Clapper® with Night Light is used to turn the light on and off at that setting.*

h. A desk fan

-Yes, as long as it is below 200 watts and will turn on automatically when power is applied.

**2. Which appliances should I NOT use with
The Child Talking Clapper® with Night Light?**

**Warning: Do not plug in to anything above 200 watts,
here are some examples.**

a. Any electrical heating appliance

- coffee maker
- A space heater
- Toasters
- Etc.

b. Medical equipment

c. Inductive loads, such as a motor

d. An Air conditioner

e. A computer and computer monitor

- Most computer monitors do not turn on when the power is applied so this is not a good application for The Child Talking Clapper® with Night Light.

f. Do not plug The Child Talking Clapper® with Night Light into any non-standard power source such as a dimming circuit.

3. Does The Child Talking Clapper® with Night Light have two or three prong sockets?

- Two prong

4. What is the Maximum wattage that The Child Talking Clapper® with Night Light can control?

- 200 watts

5. Does The Child Talking Clapper® with Night Light work overseas on 220 volts?

- No, The Child Talking Clapper® with Night Light is designed only for 120 vac.

6. My Clapper is not working anymore why?

The Child Talking Clapper® with Night Light is made with a fuse for safety reasons:

- If The Child Talking Clapper® with Night Light is overloaded with too high of wattage The Child Talking Clapper® with Night Light fuse will blow and the The Child Talking Clapper® with Night Light will not work. The fuse is not replaceable by the user.

7. How close do I need to be to The Child Talking Clapper® with Night Light for it to hear my claps?

-This depends greatly on the room and the objects between you and The Child Talking Clapper® with Night Light:

- a. First do not block The Child Talking Clapper® with Night Light with drapes or furniture. These will block your claps from reaching The Child Talking Clapper® with Night Light.
- b. Familiarize yourself with how The Child Talking Clapper® with Night Light works in your room by —
 - 1. Stand 3 feet away from the plugged in The Child Talking Clapper® with Night Light and clap to turn on/off the light.
 - 2. Move back a few feet and try again.
 - 3. Continue until you are too far away from The Child Talking Clapper® with Night Light for it to detect your claps.
- c. Now you know the clap detection range in your room.

IMPORTANT SAFETY NOTES

- a. CAUTION: Risk of Electric Shock and Fire Hazard
- b. This is not a toy. This is not intended for use by children.
- c. For adult use only.
- d. Match wide blade of plug to wide slot, fully insert. For safe use, plug only into exposed wall outlets where a device is ventilated and cannot contact bed covering or other material.
- e. Do not use The Child Talking Clapper® with Night Light with any electrical heating appliances such as toasters, hair dryers, coffee pots, etc.

- f. Do not use The Child Talking Clapper® with Night Light with any appliance that can create a fire hazard with prolonged use.
- g. Do not use with medical equipment.
- h. Do not use with inductive loads.
- i. The maximum wattage for an appliance is 200 watts
- j. Indoor Dry Location Use Only

WARNING:

The Child Talking Clapper® with Night Light requires standard 120 VAC power.

Do not plug The Child Talking Clapper® with Night Light into any non-standard power source as this may lead to electric shock or fire. For example, **Do Not use The Child Talking Clapper® with Night Light on a dimming circuit.**

This device complies with part 15 of the FCC Rules. Operation is subject to the following two conditions:

1. This device may not cause harmful interference.
2. This device must accept any interference received, including interference that may cause undesired operation.

CAUTION:

The user that changes or modifications not expressly approved by the party responsible for compliance could void the user's authority to operate the equipment.

Note: This equipment has been tested and found to comply with the limits for a class B digital device, pursuant to part 15 of the FCC Rules. These limits are designed to provide reasonable protection against harmful interference in a residential installation. This equipment generates, uses and can radiate radio frequency energy and, if not installed and used in accordance with the instructions, may cause harmful interference to radio communications. However, there is no guarantee that interference will not occur in a particular installation. If this equipment does cause harmful interference to radio or television reception, which can be determined by turning the equipment off and on, the user is encouraged to try to correct the interference by one or more of the following measures:

- Reorient or relocate the receiving antenna.
- Increase the separation between the equipment and receiver.
- Connect the equipment into an outlet on a circuit different from that to which the receiver is connected.
- Consult the dealer or an experienced radio/TV technician for help including interference that may cause undesired operation.

Thirty (30) Day Limited Warranty

Joseph Enterprises offers a thirty (30) day limited warranty to the original purchaser of The Child Talking Clapper® with Night Light. The warranty covers defects in workmanship and materials only. It does not apply to product failures resulting from accidental damage, neglect, misuse or any other cause not associated with defects in workmanship or materials. Should The Child Talking Clapper® prove to be defective within the thirty (30) days from the date of purchase, the product will either be repaired or replaced, at Joseph Enterprises' discretion, free of charge. To receive warranty service, return the product insured, along with proof of purchase date and postage pre-paid to the address below. Purchasers are advised to carefully read and follow the operating and safety instructions contained in this book and included on the back of the product. This particular warranty shall disclaim Joseph Enterprises' obligation and sole responsibility respecting the product and all other warranties, implied or expressed, including implied warranties of fitness for a specific purpose. Joseph Enterprises does not authorize retailers and others to make any warranty concerning the product. Some states do not permit time limitations on an implied warranty, or limitation or exclusion of incidental or consequential damages, so the above limitations may not pertain to you. This warranty grants you specific legal rights and you may also have additional rights that vary from state to state.

WE WELCOME YOUR FEEDBACK

*Many questions can be answered by calling our
Clapper Hotline at **800-557-5856**.*

*For quick answers to common questions, please refer to
our website's FAQ section. If you have further inquiries,
email us at **help@chia.com**.*